

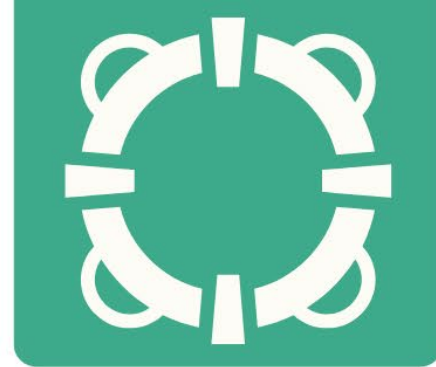


FAMILY CONNECTIONS:

NAVIGATING RESOURCES,
SUPPORT, AND MORE

Thursday, October 3rd

1:30pm ET | 12:30pm CT | 11:30 MT | 10:30am PT



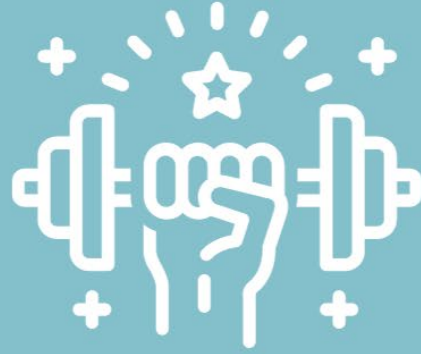
DISCLAIMER

The National Family Support Technical Assistance Center of Excellence (COE) Grant #1H79F6000160-Fam-CoE is supported by SAMHSA of the U.S. Department of Health and Human Services (HHS) as part of a financial assistance award with 100% funding by SAMHSA/HHS.

The contents herein are those of the author(s) and do not necessarily represent the official views, nor are an endorsement of, SAMHSA/HHS or the U.S. government. The National Federation of Families and the National Family Support Technical Assistance Center do not endorse any product presented.



trauma-responsive



strengths-based

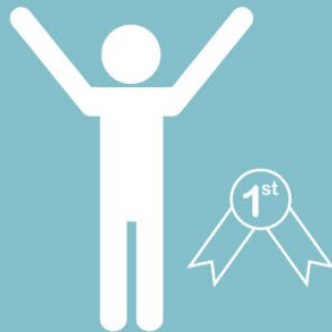


avoids blaming
caregivers



inclusive

We use family-driven language!



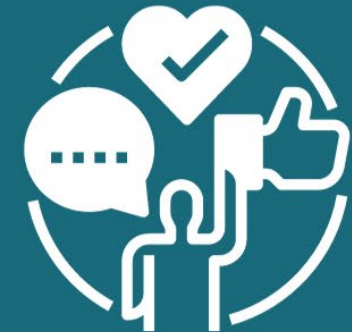
person-first



respectful



nonjudgmental



consistent with
our actions

TODAY'S DISCUSSION

FAMILY CONNECTIONS



is being recorded
in its entirety.

Learning Objectives:

- Participants will learn how to access personalized support from the Family Peer Workforce and Technical Assistance. Both offer specialized guidance, training, and a collaborative approach to access support and resources - all tailored to meet diverse needs while building capacity and resiliency.
- Acceptance Factor: By accessing reliable information, knowledge, and skills, everyone is better able to support, advocate, and act for a child at every stage of development.
- Social Justice Factor: Access to resources is a fundamental principle of social justice. Fair distribution of resources and opportunities helps build an equitable society.

NAVIGATING SYSTEMS



TECHNICAL ASSISTANCE



FAMILY PEER SUPPORT



TRAINING INSTITUTES



Family Peer Workforce and Support
Family Peer Specialist Through the Lifespan



NFSTAC Family Peer Workforce Toolkit

Across the Lifespan



NFSTAC'S FAMILY & CAREGIVER TOOLKIT



Tools, Videos, & Resources

- Where to Start
- Navigate Support
- Understand Co-Occurring Diagnoses
- Laws that Support Us
- When Your Child Turns 18
- Self for You and Your Family



Partnering with Families in Behavioral Health: The FAMILY Approach



BUILD CAPACITY AND RESILIENCY WITH TECHNICAL ASSISTANCE

resilience:

“an ability to recover from or adjust easily to misfortune or change.”

—Merriam-Webster Dictionary



<https://teamtechinc.com/remarkably-resilient-together/#donate-anchor>



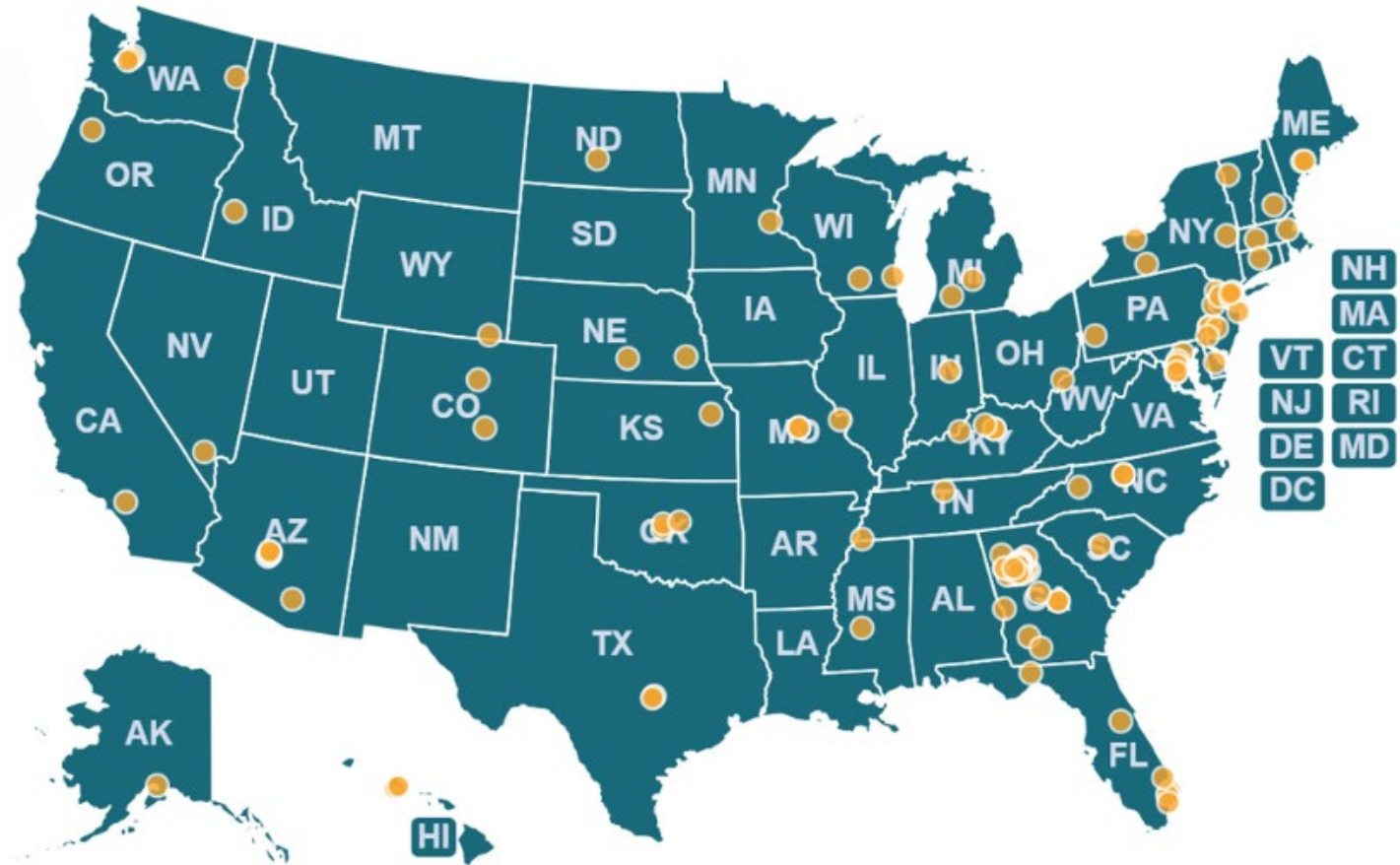
OUR FAMILY PEER WORKFORCE



Locating our
Affiliates and
Partners



Locating
Additional
Supports



SUPPORTING FAMILIES AND CAREGIVERS

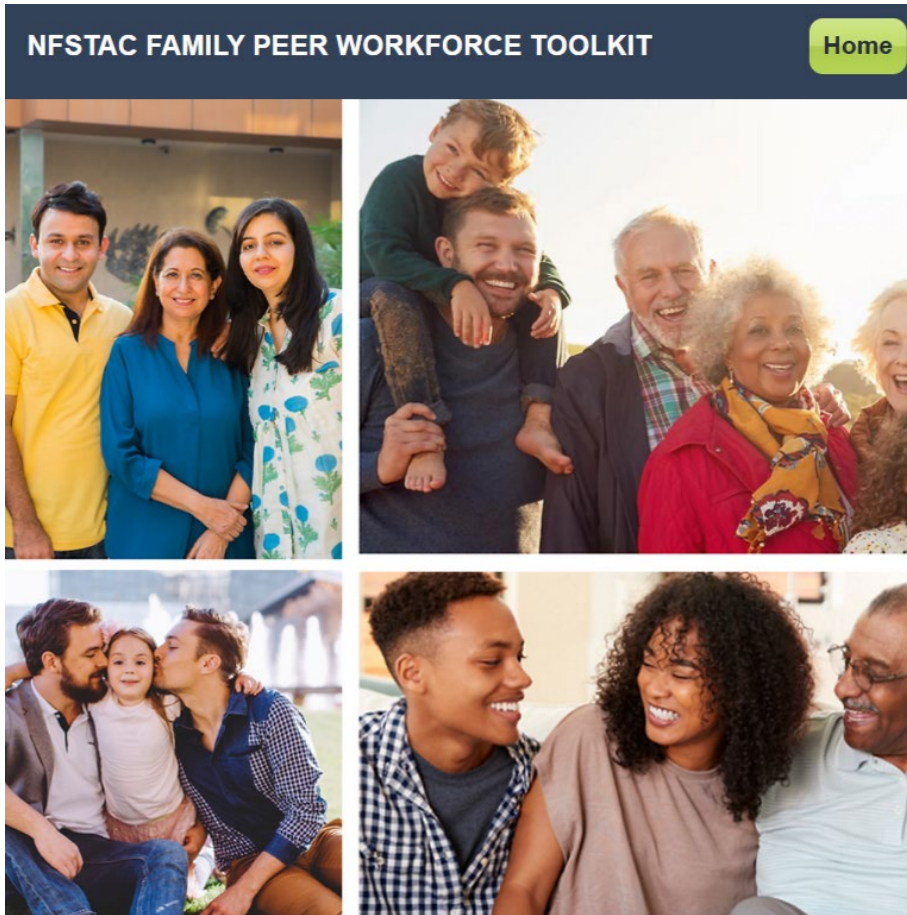


Includes:

- ◉ Where to Start
- ◉ Understanding Family-Driven Language
- ◉ Understanding Laws that Support Families
- ◉ Understanding Co-Occurring Diagnoses
- ◉ When Your Child Turns 18
- ◉ Understanding Harm Reduction
- ◉ Training Module on Partnering with Families in Behavioral Health - The Family Approach
- ◉ SAMHSA Treatment Locators (English & Spanish)



TOOLKITS FOR FAMILY PEER WORKFORCE



Includes:

- ◉ Core Competencies for Certified Family Peer Specialists.
- ◉ Employment (Hiring, Supervising, and Sustaining)
- ◉ Crisis Planning
- ◉ Training Module: Harm Reduction Through the Family Lens
- ◉ Training Module on Partnering with Families in Behavioral Health - The Family Approach



FPS “THROUGH THE LIFESPAN” ONLINE CURRICULUM



ONLINE CURRICULUM

Family Peer Specialist Through the Lifespan

100% Virtual and Free

“FAMILY APPROACH” ONLINE CURRICULUM



Six Core Sessions:

Facing Personal and Professional Attitudes

Acknowledging Family Identities and Expertise

Making Meaningful Partnerships

Identifying Solutions to Conflict

“Letting Go” to Support

Yielding to Outside Resources

“FAMILY APPROACH” ONLINE CURRICULUM



An opportunity for providers, wraparound facilitators, and others in the behavioral health workforce to deepen their understanding of skills to develop effective partnerships with families.



FAMILY Partnership Training Institute Information Session

Wednesday, Oct. 16th

FAMILY Partnership Training Institute

Begins December 2024- January 2025

Opportunity for providers, wraparound facilitators, & others in the behavioral health workforce to deepen their understanding of skills to develop effective partnerships with families.

LET'S TALK!

- ⦿ Make space for all voices and be open to learning from each other.
- ⦿ Practice the “Vegas rule.” What is said here, stays here.
- ⦿ Share questions or comments in the chat box at any time!
- ⦿ During open conversation, let’s all participate with cameras on and raise your “hand” to ask questions or share.
- ⦿ For technical assistance: write in the chat box and someone will help you.



CONTACT INFORMATION

Gail Cormier, Project Director, NFSTAC

info@nfstac.org | www.nfstac.org

Lachelle Freeman, Project Manager, NFSTAC

lwfreeman@ffcmh.org | www.nfstac.org

Gena Fitzgerald, Project Manager, NFSTAC

gfitzgerald@ffcmh.org | www.nfstac.org

Lynda Gargan, Principal Investigator, NFSTAC

lgargan@ffcmh.org | www.nfstac.org



JOIN US OCTOBER 16TH



NFF NATIONAL FEDERATION OF FAMILIES
Bringing Lived Experience to Family Support

NFS TAC NATIONAL FAMILY SUPPORT TECHNICAL ASSISTANCE CENTER
Providing Family Support Across the Lifespan

EVERYONE LEADS:

Leading Together for
Collective Impact

OCTOBER 16TH: 12:30P ET

12:30PM – 2:00PM ET



FAMILY
PARTNERSHIP TRAINING INSTITUTE



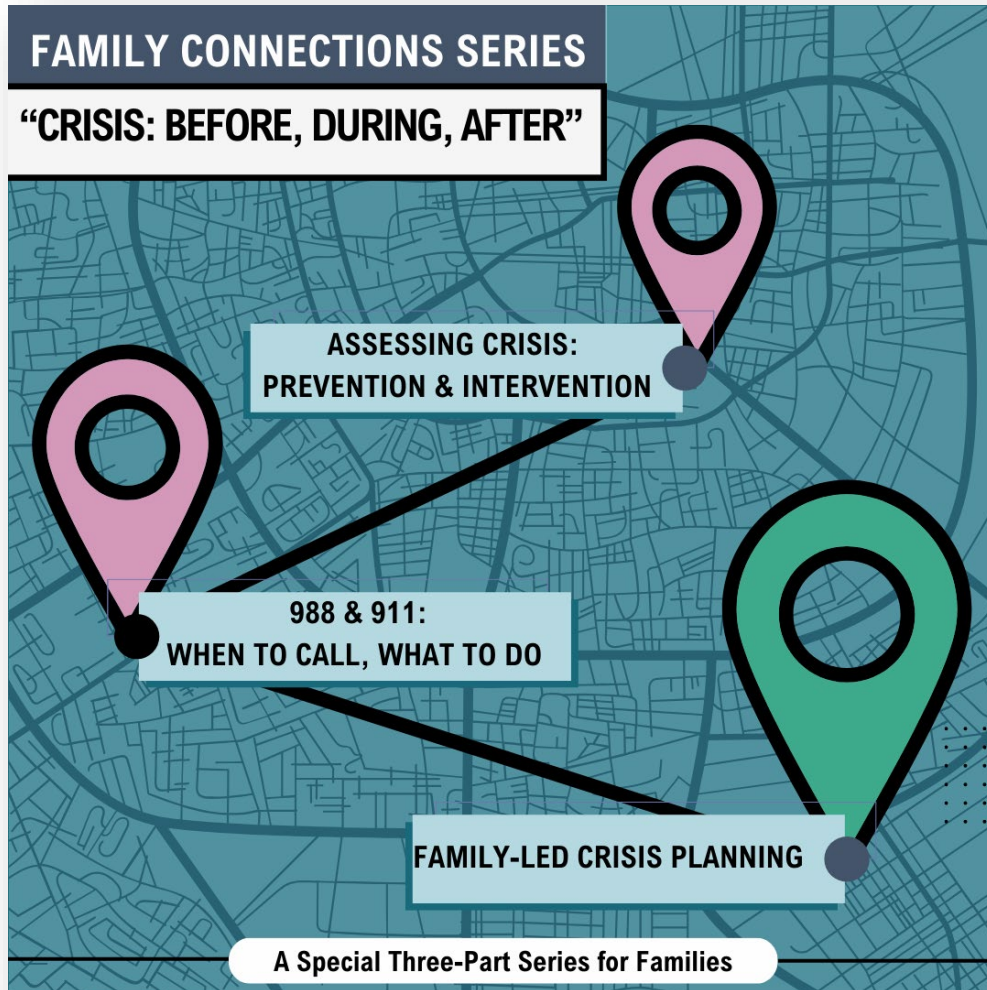
An opportunity for providers, wraparound facilitators, and others in the behavioral health workforce to deepen their understanding of skills to develop effective partnerships with families.

BOSTON UNIVERSITY **NFF** NATIONAL FEDERATION OF FAMILIES
Bringing Lived Experience to Family Support

NFS TAC NATIONAL FAMILY SUPPORT TECHNICAL ASSISTANCE CENTER
Providing Family Support Across the Lifespan

2:30 PM – 3:30PM ET

OUR NEXT FAMILY CONNECTIONS



THURSDAY, DEC. 5TH:

ASSESSING CRISIS: PREVENTION & INTERVENTION

THURSDAY, JAN. 9TH:

988 & 911: WHEN TO CALL, WHAT TO DO

THURSDAY, FEB. 6TH:

FAMILY-LED CRISIS PLANNING

HOW WAS TODAY'S FAMILY CONNECTIONS?

FAMILY CONNECTIONS:
NAVIGATING
RESOURCES,
SUPPORT, &
MORE



1

Take the
SAMHSA Survey

2

Download
Certificate to
Enter Your Name

